

ASTM A335 P11 P22 P91 P9 P5 Thick Wall Steel Tubing Round With Passivation Surface

Our Product Introduction

for more products please visit us on seamless-steel-tubes.com

Basic Information

- Place of Origin: Jiangsu China (Mainland)
- Brand Name: WUXI SYLAITH
- Certification: ISO
- Model Number: P11 P22 P91 P9 P5
- Minimum Order Quantity: 1MT
- Price: Negotiable
- Packaging Details: Exporting package/wooden box package/Or per customers' requirement
- Delivery Time: 3~15days
- Payment Terms: 30%T/T in advance or 100% L/C at sight
- Supply Ability: 8000MT/Month

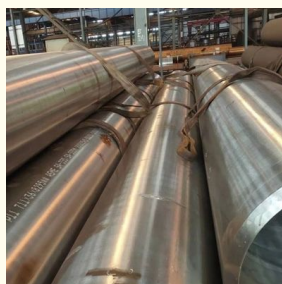


Product Specification

- Special Pipe: API Pipe
- Oiled Or Non-oiled: Slightly Oiled
- Application: Boiler Pipe
- Length: 12M, 6m
- Standard: ASTM A335 P11 P22 P91 P9 P5
- Thickness: 1.24 - 60 Mm
- Technique: Seamless|Cold Drawn
- Highlight: Round Steel Tube, cold drawn steel tube



More Images



Product Description

ASTM A335 P11 P22 P91 P9 P5 Thick Wall Steel Tubing Round With Passivation Surface

Alloy steel pipes are mainly used for high-pressure and high-temperature pipelines and equipment such as power plants, nuclear power, high-pressure boilers, high-temperature superheaters and reheaters. They are made of high-quality carbon steel, alloy structural steel and stainless heat-resistant steel. , by hot rolling (extrusion, expansion) or cold rolling (drawing).

Steel Pipes & Tubes				
Type	Seamless Pipe & Tube		SAW/ ERW/ EFW Pipe & Tube	
End	BE (Beveled End)		PE (Plain End)	
Size	OD	Thickness	Length	
	1/2" ~48"	SCH5~SC HXXS	As per client's requirement.	
Manufacturing Technique	Hot rolling	Hot work	Cold rolling	cold-drawn
Producing Standard	ASME B36.10	ASME B36.19		
Material Grade	Nickel Alloy	ASTM B474	UNS N02200/Ni 200, UNS N02201 /Ni201, UNS N04400/ Monel 400, UNS N06002 /Hastelloy X, UNS N06022/ Hastelloy C22,	
			UNS N08825/ Incoloy 825, UNS N10276/ Hastelloy C276,	
			UNS N10665 /Hastelloy B2, UNS N10675/Hastelloy B3,	
			UNS N06600/Inconel 600, UNS N06601/ Inconel 601, UNS N06625 /Inconel 625, UNS N08020 /Alloy 20	
		ASTM B161	UNS N02200/Ni 200, UNS N02201 /Ni201	
		ASTM B163	UNS N02200/Ni 200, UNS N02201 /Ni201, UNS N06601/ Inconel 601 UNS N04400/ Monel 400,	
			UNS N06600/Inconel 600,	
		ASTM B165	UNS N04400/ Monel 400	
		ASTM B407	UNS N08800 /Incoloy 800, UNS N08810 /Incoloy 800H,	
			UNS N08811 /Incoloy 800HT	
		ASTM B729	UNS N08020 /Alloy 20	
		ASTM B444	UNS N06625 /Inconel 625 ,	
		ASTM B423	UNS N08825/ Incoloy 825	
		ASTM B464	UNS N08020 /Alloy 20	
	Duplex Steel	ASTM A789 ASTM A790	UNS N10665/Hastelloy B2, UNS N10675/Hastelloy B3, UNS N06200/C2000, UNS N10276 /C276, UNS N06002/ Hastelloy-X, UNS N08031/Alloy 31	
			S31803,S32205,S32750, S32760	
	Stainless Steel	ASTM A312	TP304,TP304L,TP316,TP316L,316Ti, TP317, TP317L,	
			TP321, TP310S, TP347,S31254,N08367,N08926,N08904	
		ASTM A213	TP304,TP304L,TP316,TP316L,316Ti TP317,TP317L,TP321,TP310S,TP347,S31254, N08367, N08926,N08904	
			TP304,TP304L,TP316,TP316L,TP317,TP317L,TP321 ,	
		ASTM A269	TP347, S31254,N08367,N08926	
		ASTM B676	N08367	
	Alloy Steel	ASTM B677	UNS N08925, UNS N08926	
			Grade 3, Grade 6,Grade 8,Grade 9	

		ASTM A335	P5,P9,P11,P12,P22,P91,P92
	Carbon Steel	ASTM A106 /A53	GR.B
		API 5L	GR.B, X42, X46, X52, X56, X60, X65, X70 PSL1 & PSL2

QUALITY ASSURANCE

1.Dimension(OD WT Length Angle,etc.)

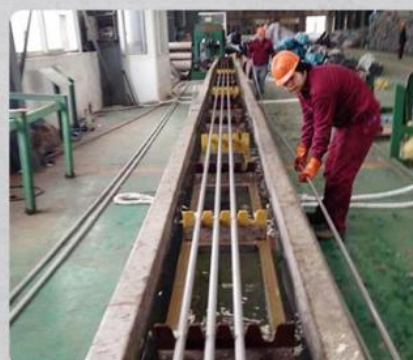
2.Chemical composition(PMI testing)

3.Mechanical properties(TS YS EL Hardness
Flattening, etc.)

4.NDT test(UT PT EDDY CURRENT,etc.)

5.Third party inspection SGS BV TUV,etc.

6.Other testings as per the related standard.



Product Usage used in many industries



Packing & Delivery



FAQ

Q1: ARE YOU FACTORY OR TRADER?

A1: Wuxi Sylath Special Steel Co.,Ltd is a manufacturer of steel pipe and tube since 2010.

We've gained our Export Right and become an integrated company of industry and trade in order to satisfy buyer's multi-request on different material and products.

Q2: WHICH MATERIAL/PRODUCTS YOU CAN PROVIDE?

A2: Seamless Stainless Steel Pipe / Tube, Seamless Carbon Stainless Steel Pipe /Tube,Galvanized Steel Tube with any Shape and Welded pipes can also be available

Q3: HOW TO GET A SAMPLE?

A3: FREE samples are available for your checking and testing. And to get free samples, you need to send us you detailed receiving address (including post code) and your DHL/FedEx/UPS account for collecting samples, courier cost will be paid in your side.

Q4. CAN YOU PRODUCE THE PRODUCTS ACCORDING TO MY OWN DRAWINGS?

A4: Yes, we can produce the products according to your drawings that will be most satisfy you.

Q5: HOW TO VISIT YOUR FACTORY?

A5: Most of the main cities have flights to Shanghai; you can take flight to Shanghai Putong/Hongqiao International Airport. If you come from Hongkong, it will take 2 hours by flight (every day 5 flight around noon time).



WUXI SYLAITH SPECIAL STEEL CO.,LTD



18921107008



sales1@ssteel.com



seamless-steel-tubes.com

168 Qiangao Road, Liangxi District, Wuxi, China